



Sutter Health

Graduate Medical Education

Sutter Roseville Medical Center
General Surgery Residency



We aim to increase access and enhance the well-being of the communities we serve through compassion and excellence in healthcare services.



OUR MISSION

The Sutter Health Graduate Medical Education programs are dedicated to guiding and supporting residents and fellows as they develop into physicians who are compassionate, collaborative and committed to providing quality patient care. With these programs, we aim to increase access and enhance the well-being of the communities we serve through compassion and excellence in healthcare services.

GOALS AND OBJECTIVES

Our mission statement guides the goals and objectives of Sutter Health Graduate Medical Education (GME) programs. Graduates of our residency and fellowship programs will:

- Gain proficiency in clinical skills and medical knowledge to provide safe, equitable and compassionate care to patients of any age and background.
- Develop the knowledge and leadership skills to effectively advocate for their patients.
- Become adept at skills needed to become resilient and maximize their own well-being.
- Attain excellent communication and professional skills to foster competent and collaborative team members, leaders, colleagues and physicians.
- Obtain lifelong learning skills to help provide quality patient care over the course of a successful, sustained career.

DIVERSITY, EQUITY AND INCLUSION COMMITMENT

In alignment with our sponsoring institutions, the Sutter Health Graduate Medical Education programs value all people and seek to end inequities in healthcare. Our residency and fellowship programs are committed to upholding a culturally diverse and inclusive environment across their program leadership, faculty, residents and fellows. Our leadership and faculty have diverse backgrounds, helping ensure they foster unique experiences that will help shape the culture of the training programs and empower residents and fellows to reach their full potential. Our programs are committed to recruiting, selecting and retaining trainees from diverse backgrounds.

A PATH OF LIFELONG LEARNING AND WELL-BEING

Residency and fellowship program leaders not only care about the well-being of our patients, but of our residents, fellows, faculty and hospital care teams. Our aims are simple, yet profound: to foster a well-coordinated, systemwide culture that supports and promotes wellness and professional fulfillment, develops and implements best practices, and identifies opportunities for contemporary approaches to analytics and scholarship. We strive for collaboration in building a comprehensive strategy for improving the overall health and well-being of our residents, fellows, faculty and staff across Sutter's academic, research and clinical enterprises.

As part of our program, residents and fellows have both formal and informal opportunities to focus on wellness, including retreats, speakers, personal time, meetings with mentors and social activities.





Our graduate medical education programs are accredited by the Accreditation Council for Graduate Medical Education (ACGME).

RESIDENCY AND FELLOWSHIP PROGRAMS – ACGME-ACCREDITED

Sutter offers many opportunities through our clerkships (undergraduate medical education); various residency and fellowship programs (graduate medical education); internships; and nursing, pharmacy and administrative training programs.

Alta Bates Summit Medical Center:

Internal Medicine

California Pacific Medical Center:

Advanced Heart Failure and Transplant; Cardiology; Endocrinology; Gastroenterology; Hand and Microsurgery; Hematology and Medical Oncology; Internal Medicine; Ophthalmology; Psychiatry; Pulmonary Disease and Critical Care Medicine; Transplant Hepatology

Sutter Amador Hospital:

Family Medicine Rural Training Track

Sutter Davis Hospital and Sutter Medical Center, Sacramento:

Family Medicine

Sutter Roseville Medical Center:

Anesthesiology, Emergency Medicine, Internal Medicine, Surgery, Transitional Year

Sutter Santa Rosa Regional Hospital:

Family Medicine



Leon G. Clark, MBA

Vice President, Chief Academic
Affairs Officer and Designated
Institutional Official



Sylvie Umuhoza

Senior Director of Academic Affairs

At Sutter, our Graduate Medical Education programs offer physicians a training experience in an integrated network that will prepare them to lead the field in delivering advanced, compassionate, evidence-based care to patients across diverse communities.

Our training programs in the Bay Area and the Sacramento Valley are nationally accredited by the Accreditation Council for Graduate Medical Education (ACGME).

Residents and fellows at Sutter train in specialty programs including internal medicine, surgery, anesthesiology, family medicine, psychiatry, cardiology, hematology, oncology and gastroenterology, neurocritical care, pulmonary and critical care, health psychology and more.

Our residents and fellows select elective experiences to tailor their training to individual interests, whether that be primary care, hospitalist medicine or post-residency fellowship training. They also participate in quality improvement initiatives and training in translational and clinical research.

We foster a welcoming, learning environment built on a commitment to diversity, equity and inclusion. That was certainly reflected in our latest class of first-year residents as two-thirds of the physicians are ethnically diverse.

Sutter's network of 24 acute care hospitals and over 200 clinics serve diverse communities in both urban and rural settings, providing a range of experience that helps equip our residents and fellows to care for patients with unique health concerns and complex social determinants of health.

Training sites across Sutter's network include care centers that have received national acclaim for the treatment of strokes, heart attacks, traumatic injury, acute rehab, neurodegenerative illnesses, cancer and more.

Here at Sutter, you'll train with some of the nation's best physician-mentors who have studied and practiced at our hospitals as well as other top medical institutions across the United States.

Incoming residents and fellows have the opportunity to not only help shape world-class medical programs but to gain clinical experience unique to our hospitals and their place in Northern California. The next phase of your medical education awaits, and we couldn't be more excited for you to learn more about – and join – our GME program.

Sincerely,

Leon G. Clark, MBA

Sylvie Umuhoza



**FOCUSED
CURRICULUM**



MENTORSHIP



**IRB
FACILITATION**

We believe that research and scholarship are integral pieces of providing relevant and evidence-based medicine. Our mission is to provide all our graduates with a strong foundation of research methodology that will set them up for success.

Three things are essential for a successful resident research experience: a focused research curriculum, mentorship and facilitation through the Institutional Review Board (IRB) process. The Resident Scholarly Activity Curriculum has been built into the resident didactic schedule. These courses cover a variety of topics.

Among these are:

- Critical Appraisal of Research Literature
- Descriptive Statistics
- Inferential Statistics
- Qualitative Research
- Quantitative Research
- Research Methodology
- Study Design

As a complement to the research curriculum, all residents are required to complete a scholarly project before the conclusion of their residency program. These projects will range from case studies, grand round participation or quality improvement projects to key involvement with IRB-approved projects.

At the end of each year, residents and faculty are invited to present their work at a research symposium to highlight current work as well as to inform other clinicians, administrative leadership and researchers.

Mentorship will be available to faculty and residents through all steps of the scientific and IRB proposal process.



RESIDENT BENEFITS

- Medical insurance
- Dental insurance
- Vision insurance
- Life insurance
- Long-term disability insurance
- Short-term disability
- Flexible spending accounts
- Retirement benefits
- Paid time off benefits (vacation, holiday, etc.)
- Leaves of absence, including family care, bereavement, etc.
- Employee assistance programs
- Employee resource groups

At Sutter, we see employees as our most valuable assets, and we are fortunate to have attracted some of the most talented professionals. We strive to provide our employees with a highly comprehensive benefits package and extend these benefits to our residents.

Salary, compensation and benefits are commensurate to a resident's current program year.*

AY 2023-2024 SALARIES

PGY 1: \$74,284	PGY 5: \$91,806
PGY 2: \$78,243	PGY 6: \$97,193
PGY 3: \$83,045	PGY 7: \$101,562
PGY 4: \$86,809	PGY 8: \$106,127

ADDITIONAL GME BENEFITS

- One-time Relocation Stipend: **\$2,000 maximum** (for within 50 miles or if qualified)
- Housing Stipend (Valley Area): **\$6,000 annually**
- Housing Stipend (Bay Area): **\$8,500 annually**
- Licensing Fees: **\$2,000 maximum** throughout program duration
- DEA Renewal: **\$900 maximum**
- CME: **\$2,000 annually**
- Scholarly Activity/Presentations at Conferences: **\$500 annually**
- One-time American Board Specialties Reimbursement (scores must be shared): **\$1,300**
- Meals: **\$35/day** if not provided
- Parking: **\$100/month** if required

* Disclaimer: This information does not apply to any employee who is in a collective bargaining unit represented by a recognized labor organization unless otherwise specified in a collective bargaining agreement.



Sutter Health is a not-for-profit integrated health delivery system that spans Northern California. The system is committed to health equity, community partnerships and innovative, high-quality patient care. More than 65,000 employees and associated clinicians serve more than 3 million patients through our network of hospitals, clinics and home health services.

LEGEND

- Valley Counties
- Bay Counties
- Hospitals
- Hospitals With Residency and Fellowship Programs

2022

SRMC BY THE NUMBERS

2,413
Births

24,909
Patient discharges

97,318
Emergency room visits

89,821
Outpatient visits

3,802
Employees

776
Physicians

Sutter Roseville Medical Center (SRMC) Awards

RECOGNIZED AGAIN AS HEALTHCARE EQUALITY LEADER

SRMC was recognized on the 2022 Healthcare Equality Index as an LGBTQ+ Healthcare Equality Leader. This two-year designation recognizes healthcare providers who uphold policies and practices dedicated to the equitable treatment and inclusion of LGBTQ+ patients, visitors and employees. Only 496 healthcare providers nationwide earned this designation in 2022 and this year represents the sixth time SRMC has earned this distinction.

SRMC EARNS AN "A" FOR HOSPITAL SAFETY GRADES

SRMC earned an "A" grade from the Leapfrog Group for prioritizing patient safety and helping protect patients from preventable harm and errors. Only 29 percent of hospitals nationwide received a "A" grade in Spring 2023.

HEALTHGRADES: SRMC AMONG U.S. HOSPITAL ELITE

SRMC was named one of America's 50 Best Hospitals and one of America's 100 Best Hospitals in Critical Care, Gastrointestinal Surgery and Prostate Surgery from Healthgrades, placing it among the top 5 percent of hospitals nationwide for these services. SRMC also received Five Stars from Healthgrades in the treatment of heart attack, stroke, pneumonia, sepsis and pulmonary embolism and the procedures of prostate removal surgery, total hip replacement, colorectal surgeries, upper gastrointestinal surgeries and defibrillator procedures, placing it among the top 15 percent of hospitals nationwide for these services.

**ANESTHESIOLOGY
RESIDENCY**



Michael B. Pesce, M.D.
Program Director



Michael Zhou, M.D.
Associate Program Director



Sarah Cervenka
Program Manager

**EMERGENCY
MEDICINE
RESIDENCY**



Linda Herman, M.D.
Program Director



William Webster, M.D.
Associate Program Director



Lori Burdick
Program Manager

**INTERNAL
MEDICINE
RESIDENCY**



Van Geslani, M.D.
Program Director



Daniel Jurewitz, M.D.
Associate Program Director



Leslie Shane
Program Manager

**SURGERY
RESIDENCY**



Jon Perlstein, M.D.
Program Director



Jessica Bowman, M.D.
Associate Program Director



Dustin Zierold, M.D.
Associate Program Director

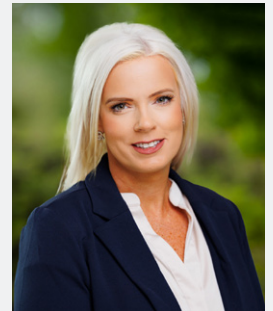


Patricia Barnes
Program Manager

**TRANSITIONAL
YEAR RESIDENCY**



Rishi Menon, M.D.
Program Director



Sarah Cervenka
Program Manager



Ian Armacher
Program Coordinator



**Frances Patmon, Ph.D.,
FNP-C, RN**
Director, Graduate Medical
Education Operations North Valley
and Research Scientist, GME



TOP REASONS TO TRAIN AT SRMC

Level II trauma center, Sutter Rehabilitation Institute, endoscopy center, the da Vinci Robotic Surgery System, 10 main operating rooms and two surgery centers with five operating rooms each at the primary site in Roseville.

An experienced faculty, including former chief residents, teaching attendings and graduate medical education leaders at prestigious institutions from around the country.

Access to world-class facilities and technology within the award-winning Sutter Health network.

Stimulating, team-based and patient-centered clinical approach.

Participation in research and quality improvement initiatives.

Dedicated time for diverse and challenging didactic activities.



Dear Residency Candidate,

On behalf of the faculty and administration of Sutter Roseville Medical Center, I'd like to thank you for your interest in our Surgery Residency Program. We're dedicated to providing an enriching academic and clinical learning environment that will successfully prepare you for independent practice in the field of surgery. In alignment with the mission of Sutter Health, the Surgery Residency Program will work to enhance the well-being of people in the community through a not-for-profit commitment to compassion and excellence in healthcare service.

Surgical residents train under board-certified and licensed physicians with extensive teaching experience and a strong commitment and passion for educating the next generation of surgeons. These dedicated doctors mentor residents and instill in them a desire for lifelong learning with a goal of improving their surgical practices throughout their careers. My faculty colleagues and I train residents to provide patient-centered surgical care that promotes medical advances using the latest research and technology.

Sutter Roseville Medical Center's high patient volume and unique cases provide residents with hands-on experience and knowledge in surgery and its subspecialties. Residents train at Sutter Roseville Medical Center, Sutter Medical Center Sacramento and UC Davis Medical Center with a variety of clinical rotations. Those rotations include surgery, thoracic surgery, head and neck surgery, urology, vascular surgery, trauma surgery, surgical oncology, colorectal surgery, bariatric surgery, transplant and hepatobiliary surgery, pediatric surgery, burn surgery, orthopedic surgery, surgical critical care and endoscopy. This is an exciting time for surgical education in the greater Sacramento area and at Sutter Health.

We welcome your questions about the program. Please reach out to our program manager, Patti Barnes, for more information. Again, thank you for your interest in our program. I look forward to meeting you.

Sincerely,

A handwritten signature in blue ink, appearing to read 'Jon Perlstein'.

Jon Perlstein, M.D., FACS

Surgery Residency Program Director, Sutter Roseville Medical Center
Chair, Trauma and Acute Care Surgery

Medical Director of Trauma Services, Sutter Roseville Medical Center
Medical Director of Trauma-Neuro ICU, Sutter Roseville Medical Center

Associate Professor of Trauma Surgery, California Northstate University College of Medicine

Adjunct Associate Professor of Surgery, Uniformed Services University of the Health Sciences (USUHS)

PROGRAM LEADERSHIP



Jon Perlstein, M.D.
Program Director
Trauma and Acute Care Surgery



Dustin Zierold, M.D.
Associate Program Director
Trauma and Acute Care Surgery



Jessica Bowman, M.D.
Associate Program Director
Trauma and Acute Care Surgery



Patricia Barnes
Program Manager

CORE FACULTY



Joel Crawford, M.D.
Vascular Surgery



Andrew DeMar, M.D.
Trauma and Acute Care Surgery



Sterling Humphrey, M.D.
Thoracic Surgery



Brian Pickard, M.D.
Surgical Critical Care



Subhash Reddy, M.D.
Minimally Invasive and
Bariatric Surgery



Shumaila Syed, M.D.
General Surgery

2023-2024 AY Rotation Schedule
13 four-week blocks

PGY-1*	1	2	3	4	5	6	7	8	9	10	11	12	13
Surgical Rotation	ACS	ACS	Night Float	Night Float	Vascular/Thoracic	Vascular/Thoracic	Trauma	Trauma	General	EM	Bariatric/MIS	Orthopedic	ENT

PGY-2	1	2	3	4	5	6	7	8	9	10	11	12	13
Surgical Rotation	General	General	ACS	ACS	Night Float	Night Float	Trauma/Surg CC	Trauma/Surg CC	Vascular/Thoracic	Colorectal	Endoscopy/VAT	Pediatric	Transplant/HPB

PGY-3	1	2	3	4	5	6	7	8	9	10	11	12	13
Surgical Rotation	Vascular/Thoracic	Vascular/Thoracic	Colorectal	Colorectal	Night Float	ACS	Surgical Oncology	Pediatric	General	Trauma/Surg CC	Burn Surgery	Transplant/HPB	Bariatric/MIS

PGY-4	1	2	3	4	5	6	7	8	9	10	11	12	13
Surgical Rotation	General	Pediatric	Cardiac	Cardiac	Trauma/Surg CC	Surgical Oncology	Colorectal	Vascular/Thoracic	ACS	Endocrine	Endocrine	Transplant/HPB	Bariatric/MIS

PGY-5	1	2	3	4	5	6	7	8	9	10	11	12	13
Surgical Rotation	General	General	Vascular/Thoracic	Vascular/Thoracic	Trauma/Surg CC	Trauma/Surg CC	Colorectal	Colorectal	ACS	ACS	Surgical Oncology	Bariatric/MIS	Bariatric/MIS

NOTES ON ROTATIONAL EXPERIENCES

General Surgery: All general surgery rotations include many of the essential content areas such as the abdomen and its contents; the alimentary tract; noncardiac thoracic surgery; skin, soft tissues, and breast; endocrine surgery; and head and neck surgery.

Dedicated Rotations: Dedicated rotations are provided in pediatric surgery; surgical oncology; trauma and surgical critical care; acute care surgery; vascular and thoracic surgery; endoscopy; transplant and hepato-pancreato-biliary surgery; colorectal surgery; bariatric and minimally invasive surgery; noncardiac thoracic surgery; cardiac surgery; orthopedic surgery; burn surgery; and ear, nose and throat surgery.

Elective Options: Residents will have multiple elective options, including trauma, critical care, vascular surgery, surgical oncology, urologic surgery and general surgery.

Vacation: Residents will not be allowed to take vacation during rotations in night float, burns, transplant or pediatric surgery.

ABBREVIATION KEY

ACS: Acute Care Surgery

Bariatric/MIS = Bariatric and Minimally Invasive Surgery

ENT = Ear, Nose and Throat Surgery

Transplant/HPB = Transplant and Hepato-Pancreato-Biliary Surgery

Trauma/Surg CC = Trauma and Surgical Critical Care

Vascular/Thoracic = Vascular and Thoracic Surgery



Sutter Health
Graduate Medical Education