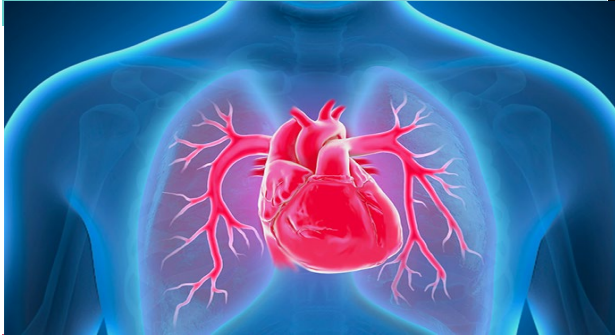


Demystifying Pulmonary Hypertension



TARGET AUDIENCE:

Hospital and Community Based Physicians, ED Physicians, PCPs, Anesthesiologists, Internists, Cardiologists, Pulmonologists, and APNs

LEARNING OBJECTIVES:

- Review commonly used terms, introduce pathogenic mechanisms and pathophysiology
- Review the World Health Organization (WHO) groupings and how they are diagnosed
- Assess treatment options
- Review how to approach patients with pulmonary hypertension

Thursday, November 5th, 2020

12:30 – 1:30 pm

CME/CNE VIRTUAL GRAND ROUNDS WITH Q&A

More Information - suttermd.com/virtualgrandrounds

Click [Here](#) to Join from WebEx

Dial-in:(240) 454-0887 - Access code: 806 847 670

For WebEx tips or virtual assistance

please contact: suttermvgrndrds@sutterhealth.org



Brian M. Bellucci, MD

Fellowship and Board-Certified Pulmonary Disease and Critical Care Medicine

Sutter Roseville Medical Center

sutterhealth.org

CME credit is available for physicians. Sutter Roseville Medical Center is accredited by the California Medical Association (CMA) to provide continuing medical education for physicians. Sutter Roseville Medical Center takes responsibility for the content, quality and scientific integrity of this CME activity. Sutter Roseville Medical Center designates this educational activity for a maximum of *1 AMA PRA Category 1 Credit(s)*™. Physicians should only claim credit commensurate with the extent of their participation in the activity. This credit may be applied to the CMA Certification in Continuing Medical Education.

CNE attendance certificates available for nurses. Provider approved by the California Board of Registered Nursing, Provider Number CEP442 for 1 contact hours. No partial credit given. Certificate of completion cannot be issued to participants who arrive more than 15 minutes late or leave more than 15 minutes early. Dr. Brian Bellucci declares he (nor his spouse/partner) have not had a personal financial relationship in the last 12 months with any manufacturer(s) of any commercial product(s), which may be discussed in this presentation. Planning Committee Members Disclosure Statements: The following members of the planning committee (and their spouses/partners) indicate that they have no financial interest or relationship with any manufacturer(s) of any commercial product(s): Adarsh Bhat, M.D., Chairman, Erica Byrd, M.D., Ronald Hsu, M.D., Joseph Jammal, M.D., Anthony Kong, M.D., Kanwal Randhawa, M.D., Robert Royer, M.D., and Heidi Mortensen-Torres, DHSC.

